



dexcom
STADIUM
MEETINGS AND EVENTS

Built in the West.
DESIGNED FOR EVERYONE.



dexcom
STADIUM
MEETINGS AND EVENTS

DEXCOM STADIUM IS WHERE COMMUNITIES COME TOGETHER,

ideas grow, and unforgettable
experiences inspire the next
generation – all proudly rooted in
the West of Ireland.



A NEW CHAPTER

for events in the West of Ireland

Opening in 2026, Dexcom Stadium is the West of Ireland's newest and most dynamic venue for meetings, conferences, and events. Located in the heart of Galway, it offers a unique blend of world-class facilities, flexible spaces, and a warm, solution-driven team - all designed to help you create unforgettable experiences.

Whether you're planning a private boardroom meeting, a vibrant conference for up to 800 delegates, or a gala dinner for over 500 people, Dexcom Stadium delivers more than just a venue. It delivers impact.

Built in the West. Designed for Everyone.

From the expansive High-Performance Centre to our fully equipped hospitality floor, every space is crafted to inspire connection, creativity, and community. Located in Galway City Centre, Dexcom Stadium offers seamless access to over 4,600 hotel rooms, ample parking, and conveniently located equidistant from Ireland West and Shannon Airports, and just two hours from Dublin. Dexcom Stadium is ready to welcome guests from near and far.

Let us help you bring your vision to life — with the people, the place, and the passion to make it happen.





WELCOME TO GALWAY

A city that inspires

Galway is recognised for its charm and vibrancy in abundance.

Known as the heart of the 'Wild Atlantic Way', Galway offers a stunning backdrop - from crystal-clear coastlines and rugged mountains to a cultural city alive with creativity.

At Dexcom Stadium, every guest will experience the famous Ceád Míle Fáilte (Welcome as Gaeilge) with the warmth and hospitality that defines the west of Ireland. Our expert team of event specialists and hospitality partners are here to ensure your experience is seamless, memorable, and impactful.

Dexcom Stadium reflects that energy in every event we host. Whether you're joining us from nearby or travelling internationally, you'll find a world class venue that's deeply rooted in a place that inspires connection and forward-thinking.

We look forward to welcoming you to the next chapter of meetings and events in the west.



Driven by purpose and powered by people, Dexcom Stadium is **where gatherings become unforgettable experiences.**

We work with trusted leaders in the business events space, from conference ambassadors and hosts, to planners, suppliers, and partners, to consistently deliver a high standard of service. Our teams experience and commitment to innovation ensure every event is professionally executed and genuinely impactful.

SOME OF OUR BENEFITS INCLUDE:

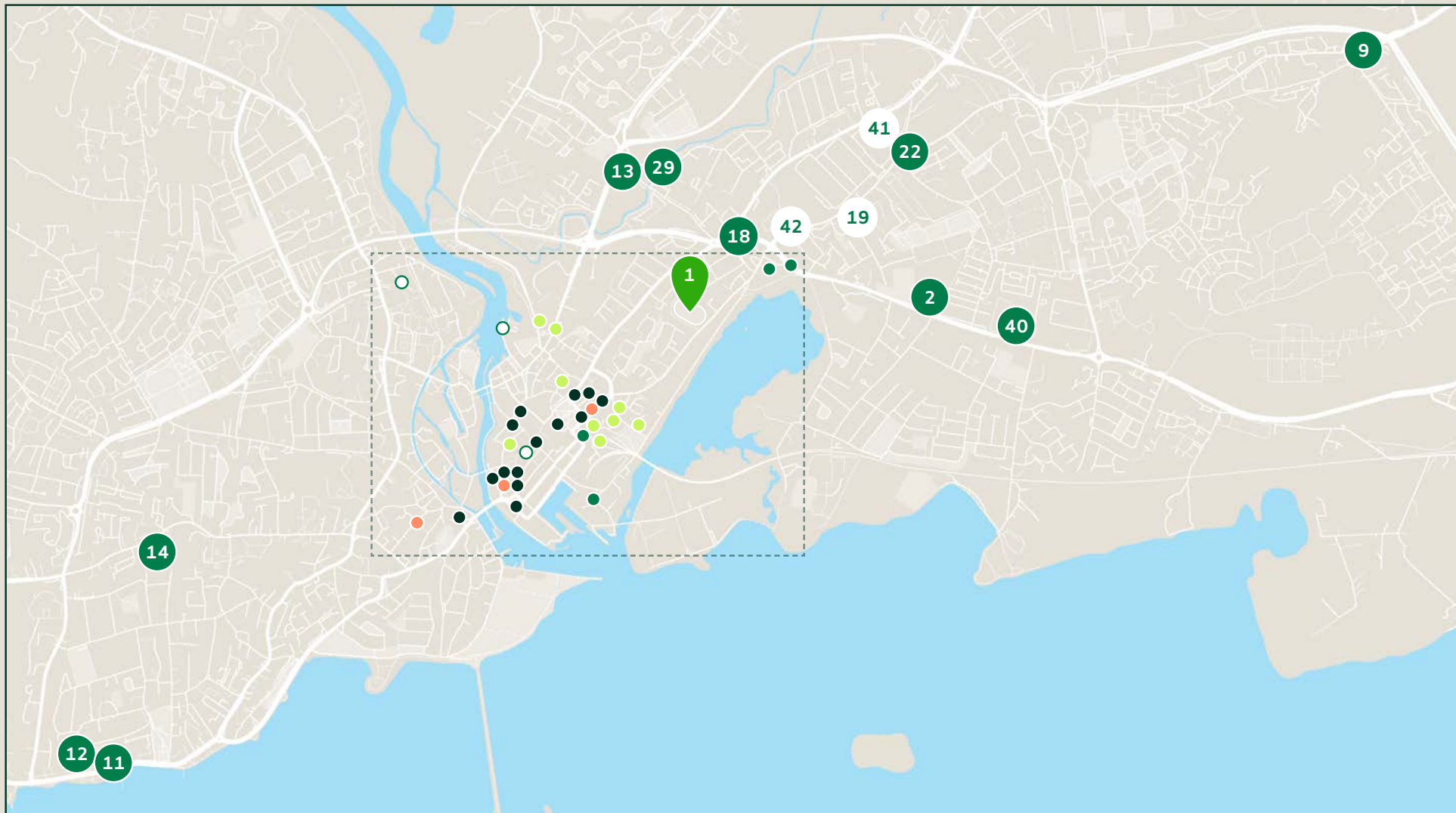
 <p>OVER 3,500SQM OF FLEXIBLE EVENTS SPACE</p>	 <p>18 MEETING SPACES ACROSS THE VENUE</p>	 <p>FULLY ACCESSIBLE</p>	 <p>SUSTAINABLE VENUE</p>	 <p>OFFERING A PERSONALISED EXPERIENCE ALONG THE WAY</p>	 <p>CLOSE TO GALWAY'S MAIN TRANSPORT LINKS</p>
 <p>DYNAMIC CITY CENTRE LOCATION</p>	 <p>STATE OF THE ART AV</p>	 <p>COMPLIMENTARY HIGH-SPEED WIFI THROUGHOUT THE VENUE</p>	 <p>DEDICATED EVENT MANAGER, EXPERT AV AND IT SUPPORT</p>	 <p>ONSITE CATERING PARTNER, MASTER CHEFS, USING LOCAL PRODUCE</p>	





OVERLOOKING LOUGH ATALIA,

in Galway City Centre, Dexcom Stadium is just minutes from major transport links and within easy reach of Ireland West Airport (90km), Shannon Airport (80km) and two hours from Dublin Airport - connecting the West of Ireland to the world.



- Accommodation
 - Restaurants
 - Pubs / Gastropubs
 - Transport links/ Parking
 - Activities and Points of Interest
- 1** Dexcom Stadium
 - 2** The Connacht Hotel
 - 3** Hyde Hotel

- 4** An Púcán
- 5** Mary Mullens
- 6** M.Fitzgeralds
- 7** Monroes
- 8** Brasserie on the Corner
- 9** Clayton Hotel Galway
- 10** The Harbour Hotel Galway
- 11** Galway Bay Hotel
- 12** Salthill Hotel

- 13** Maldron Hotel Sandy Road
- 14** The Ardilaun Hotel
- 15** The g Hotel and Spa
- 16** The Hardiman
- 17** The House Hotel
- 18** Travelodge Hotel
- 19** ATU Galway City
- 20** University of Galway
- 21** Galway Coach Station

- 22** Radisson RED Galway
- 23** Galway Food Tours
- 24** Corrib Princess
- 25** Screene's on the Square
- 26** O'Connells Bar
- 27** Murty Rabbitts
- 28** The Front Door Pub
- 29** Nox Hotel
- 30** The Dáil Bar

- 31** Kai Restaurant
- 32** Garavan's Bar
- 33** Sally Longs
- 34** The Skeff Bar
- 35** Busker Brownes
- 36** Kirby's
- 37** The Huntsman Inn
- 38** Galway Train Station
- 39** TFI Bikes

- 40** Flannery's Hotel Galway
- 41** Mervue Business Park
- 42** Galway Community College
- 43** Dyke Road Car Park
- 44** Car Park Headford Road
- 45** Corrib Centre Car Park
- 46** City Park @ Galway Coach Station
- 47** City Park @ City Centre @ Fairgreen
- 48** City Park @ Market Street





A world-class events space, ideal for both domestic and international conferences, with the capacity to host up to 5,000 delegates.



High Performance Centre



The Connacht Suite

From meetings and exhibitions to exquisite galas, Dexcom Stadium offers 18 flexible event spaces that can be reconfigured to suit your requirements.

Our largest space is the High Performance Centre, at 2,800 square metres and a ceiling height of 7.8m it is the perfect blank canvas for any event. In our Clan Stand our largest space is The Connacht Suite, flooded with natural daylight and views of the pitch. This 1,100 square metres space is divisible by four and boasts state-of-the-art AV.

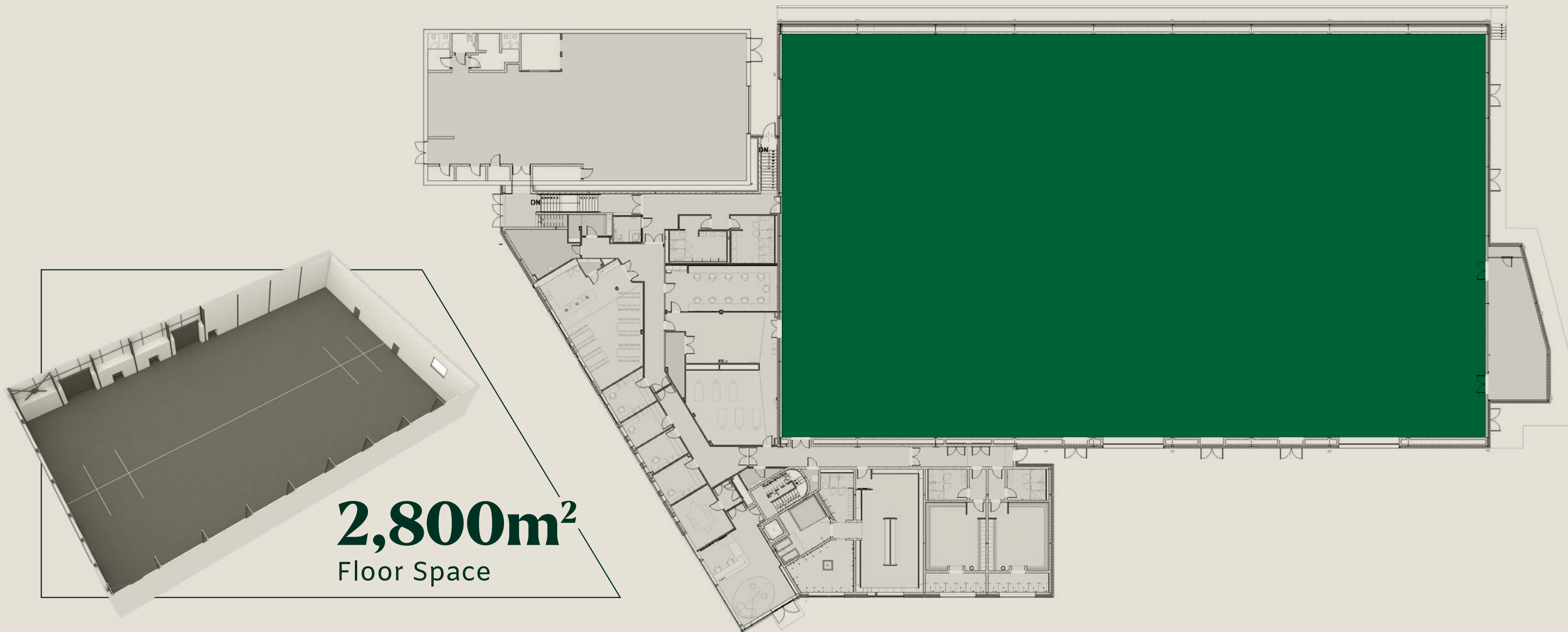
There is also our Lough Atalia suite which can host up to 36 for a board meeting with spectacular views of Galway Bay and the Burren.



High Performance Centre | Main Hall

The Perfect Space For:

- Large-Scale Conferences and Conventions
- Gala Dinners and Awards
- Exhibitions and Trade Shows
- Concerts, Festivals and Fan Events
- Exams, Training and Educational Events
- Graduations
- Hybrid and Broadcast Events



Technical Details

Size: 2,800m²

Length: 41.7m

Width: 67.1m

Height: Centre 7.8m, edge 5.8m

AV: Hired as required

1,800
Banquet Style

3,700
Standing Event

2,250
Theatre Style

2,500
Reception Style

1,500
Classroom Style

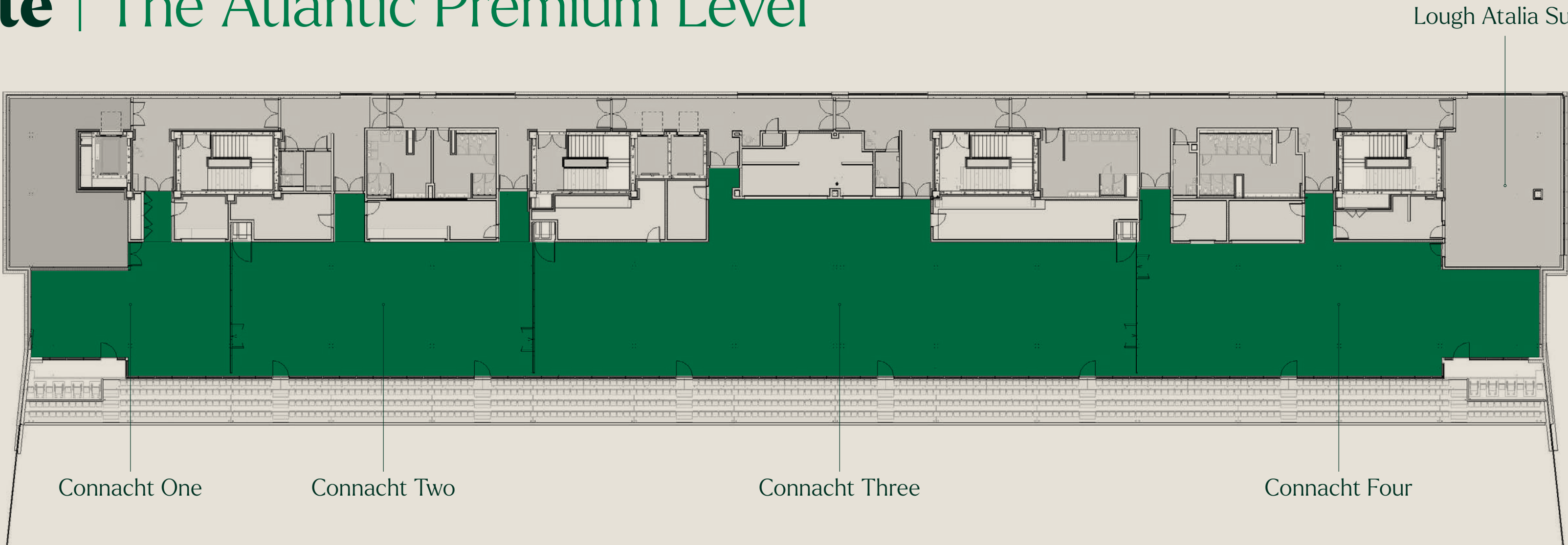
1,000
Cabaret Style



The Connacht Suite | The Atlantic Premium Level

The Perfect Space For:

- Gala Dinners and Awards
- Conferences
- Exhibitions and Trade Shows
- Training and Development Days
- Networking
- Product Launches
- Hybrid Events and Broadcasts
- Graduations



Technical Details

Size: 1,100m²

Length: 114m

Width: 8.7 – 10.7m

AV: Multiple video panels, projector & PTZ camera

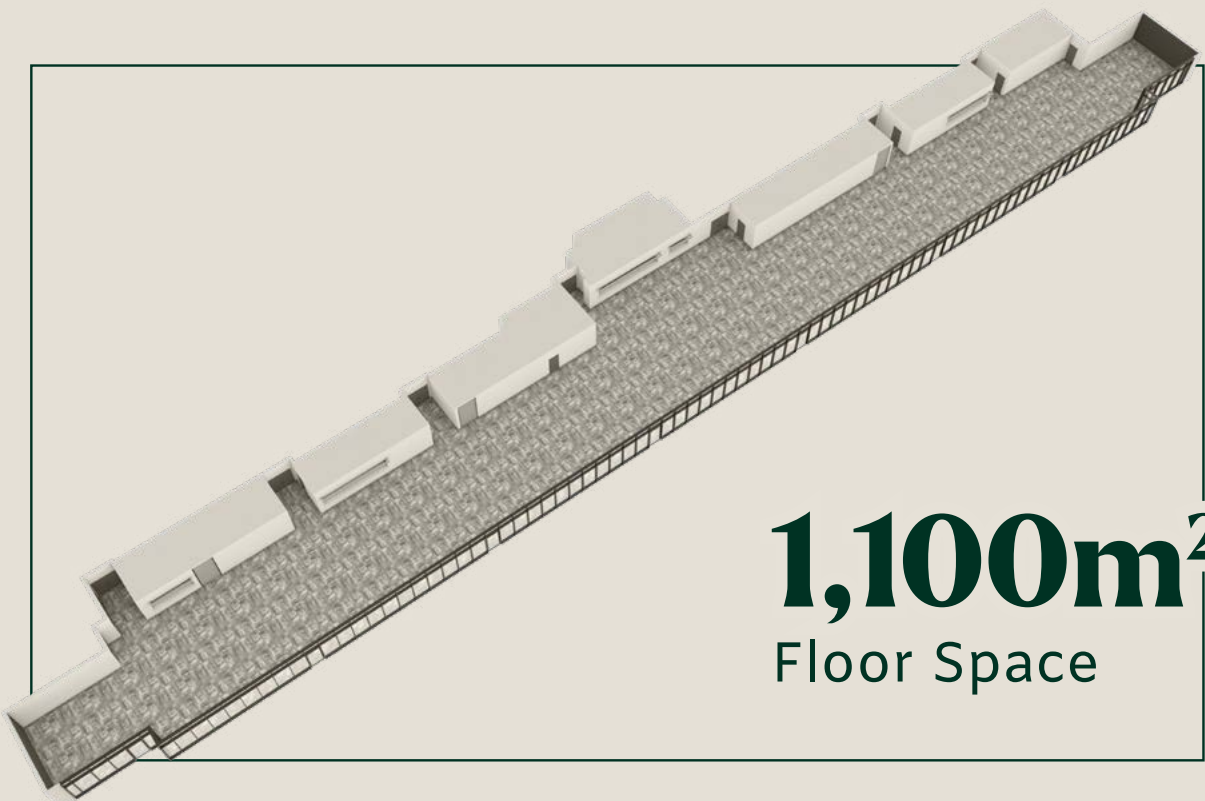
Divisible: Yes (by four)

Wi-Fi: Yes

Air-conditioning: Yes

Pillars: No

Natural Daylight: Yes



530
Banquet Style

1,040
Reception Style

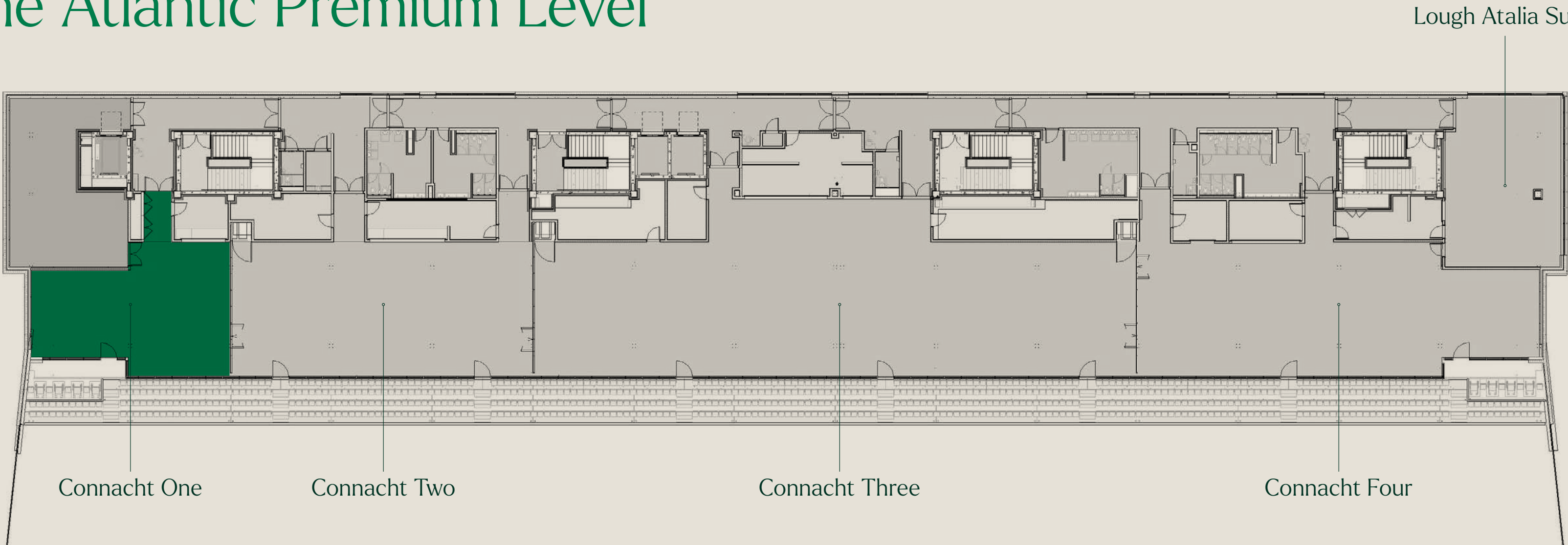
320
Cabaret Style



Connacht One | The Atlantic Premium Level

The Perfect Space For:

- Exhibitions and Trade Shows
- Training and Workshops
- Private Receptions
- Sponsor Lounges
- Exhibitor or Sponsor Zone
- Education and Community Events
- Media or Content Creation
- Conference Breakout



Technical Details

Size: 108m²

Length: 14m

Width: 8.7 – 10.7m

AV: Multiple video panels

Divisible: No

Wi-Fi: Yes

Air-conditioning: Yes

Pillars: No

Natural Daylight: Yes



60
Banquet Style

72
Theatre Style

36
Classroom Style

120
Reception Style

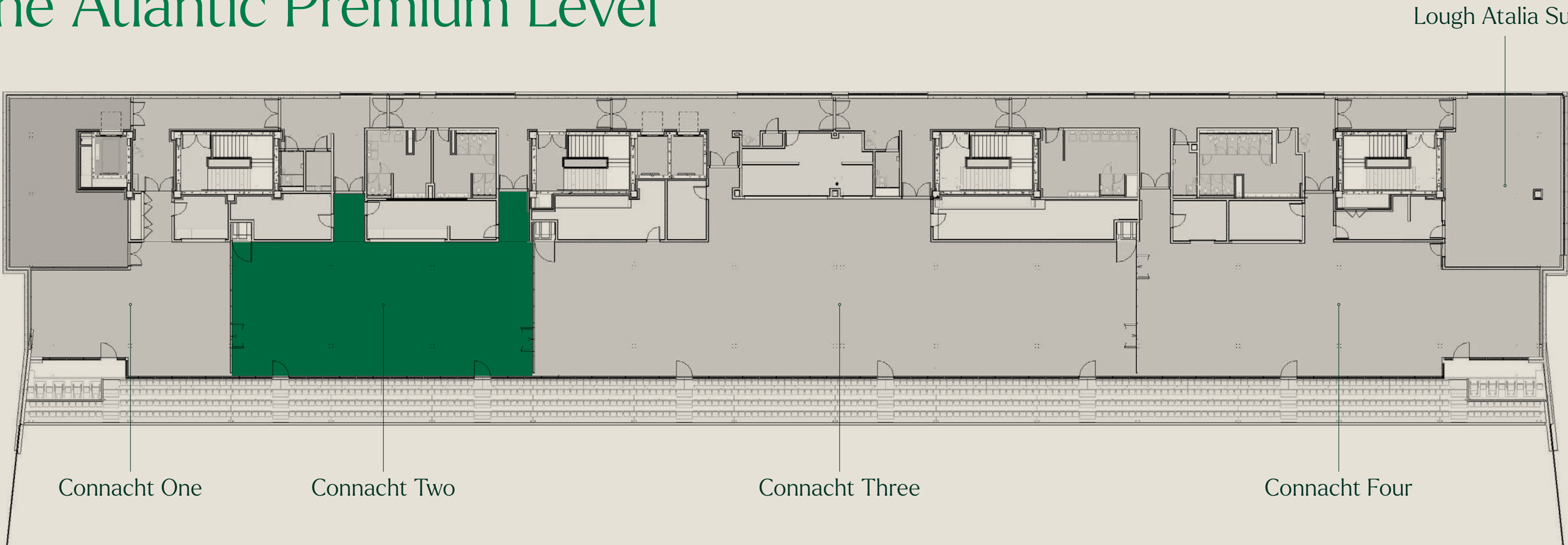
36
Cabaret Style



Connacht Two | The Atlantic Premium Level

The Perfect Space For:

- Small Conferences
- Training and Workshops
- Receptions
- Celebrations
- Education and Community Events
- Media or Content Creation
- Conference Breakout



Technical Details

Size: 140m ²
Length: 21m
Width: 8.7 – 10.7m
AV: Multiple video panels, projector & screen
Divisible: No
Wi-Fi: Yes
Air-conditioning: Yes
Pillars: No
Natural Daylight: Yes



100
Banquet Style

100
Theatre Style

60
Classroom Style

200
Reception Style

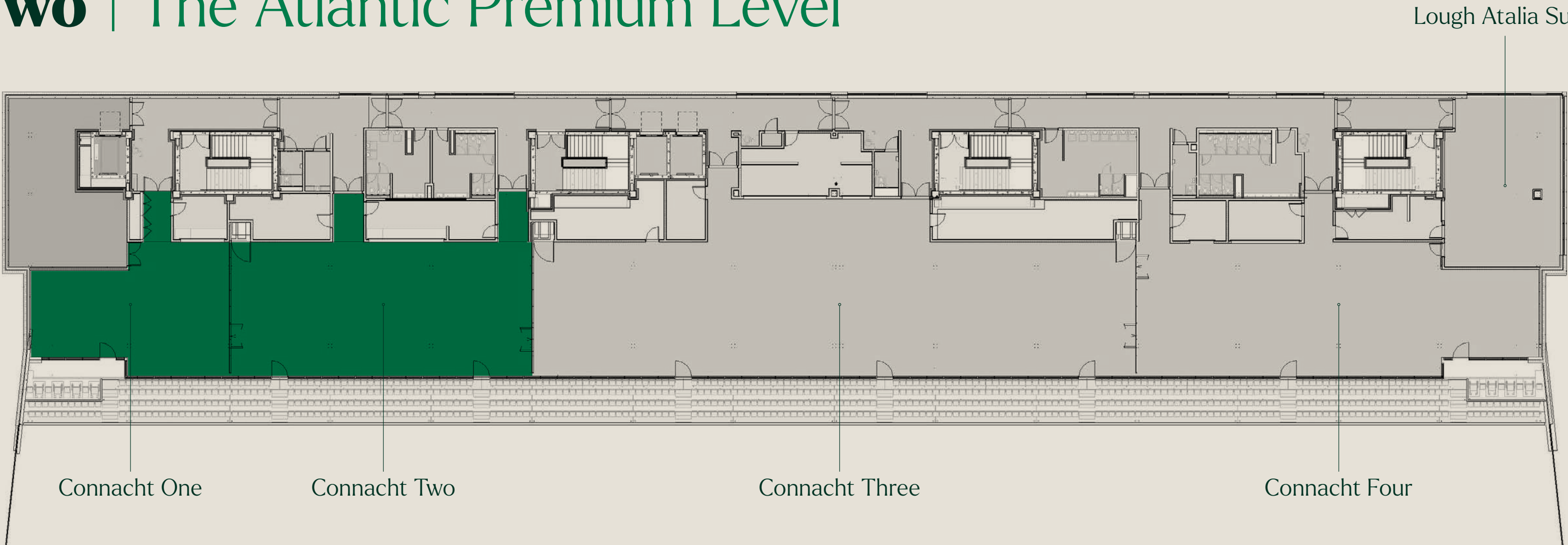
60
Cabaret Style



Connacht One + Two | The Atlantic Premium Level

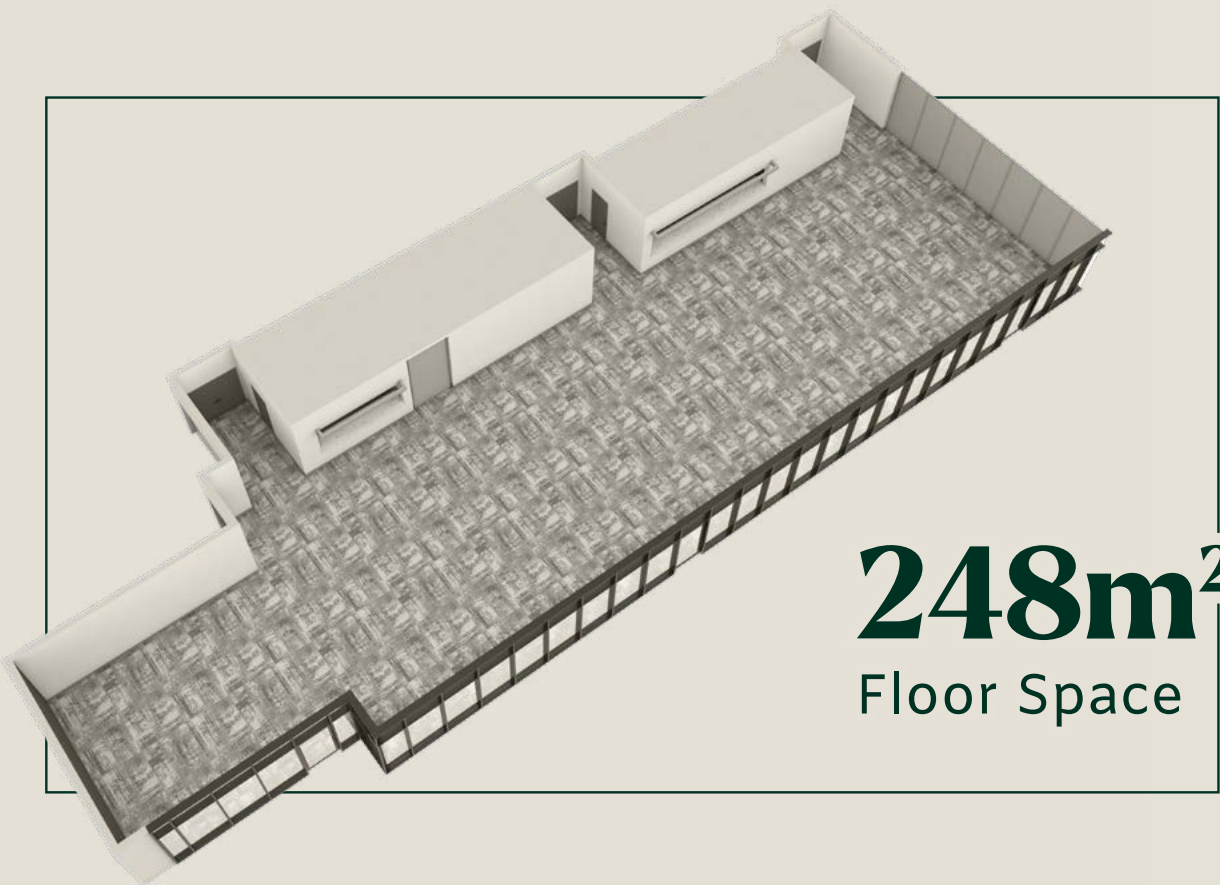
The Perfect Space For:

- Conferences and Seminars
- Networking Receptions and Dinners
- Training and Development
- Exhibitor or Sponsor Zone
- Educational Events
- Press Briefings or Media Events



Technical Details

Size: 248m ²
Length: 37.95m
Width: 8.7 – 10.7m
AV: Multiple video panels & projectors
Divisible: Yes (by two)
Wi-Fi: Yes
Air-conditioning: Yes
Pillars: No
Natural Daylight: Yes



160
Banquet Style

172
Theatre Style

96
Classroom Style

320
Reception Style

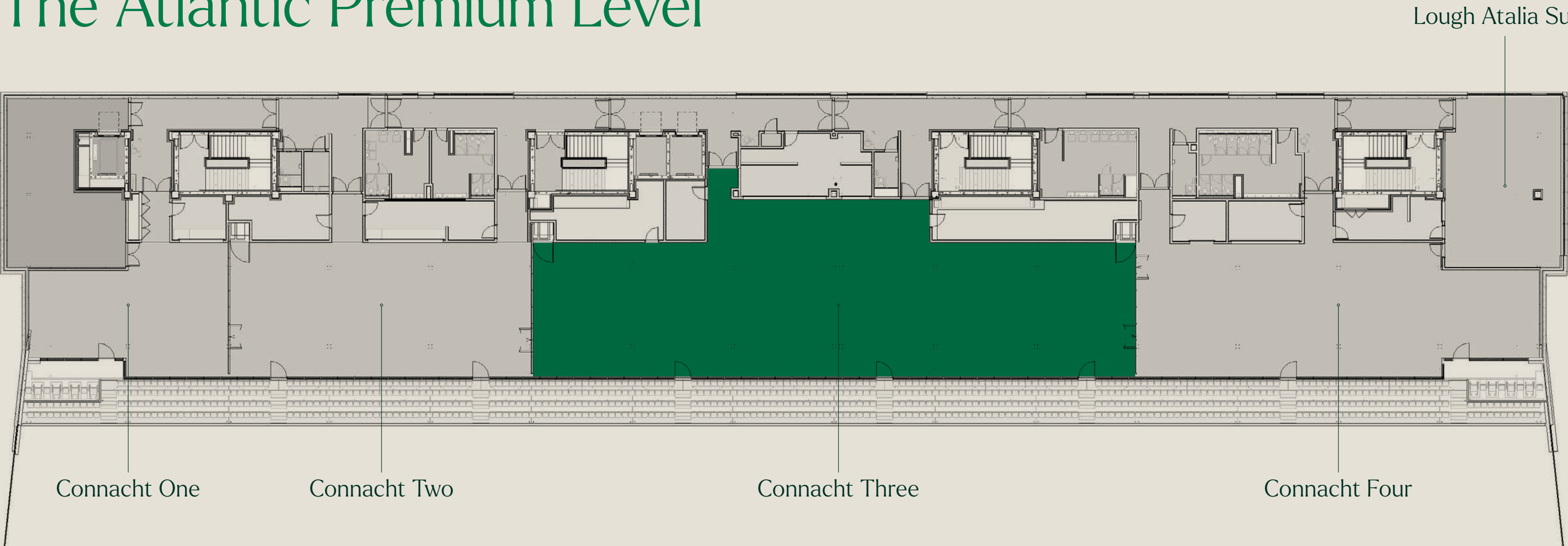
96
Cabaret Style



Connacht Three | The Atlantic Premium Level

The Perfect Space For:

- Conferences
- Exhibitions
- Training and Workshops
- Gala Dinners
- Networking Receptions
- Celebrations
- Education Events
- Graduations



Technical Details

Size: 373m²

Length: 45.72m

Width: 8.7 – 10.7m

AV: Multiple video panels, projector & screen

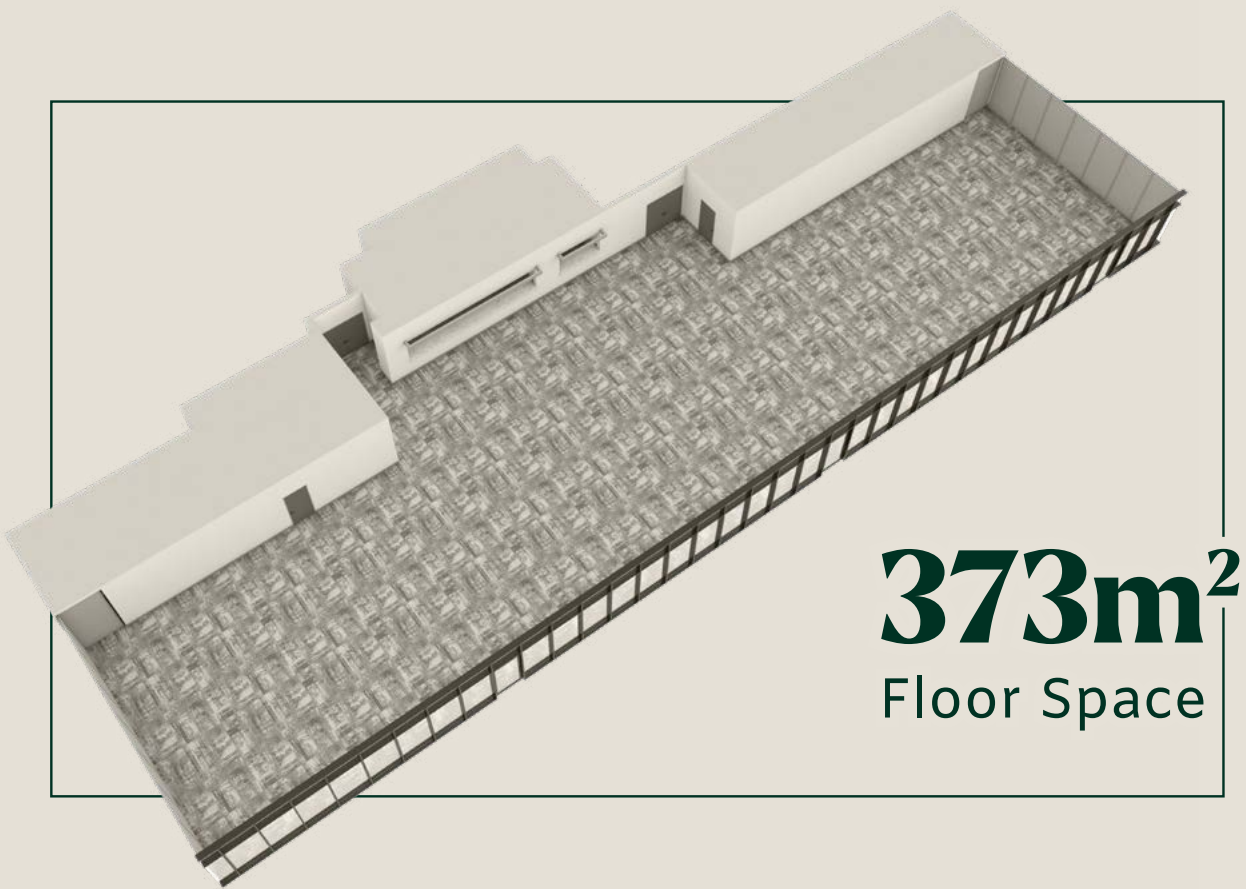
Divisible: No

Wi-Fi: Yes

Air-conditioning: Yes

Pillars: No

Natural Daylight: Yes



200
Banquet Style

200
Theatre Style

120
Classroom Style

460
Reception Style

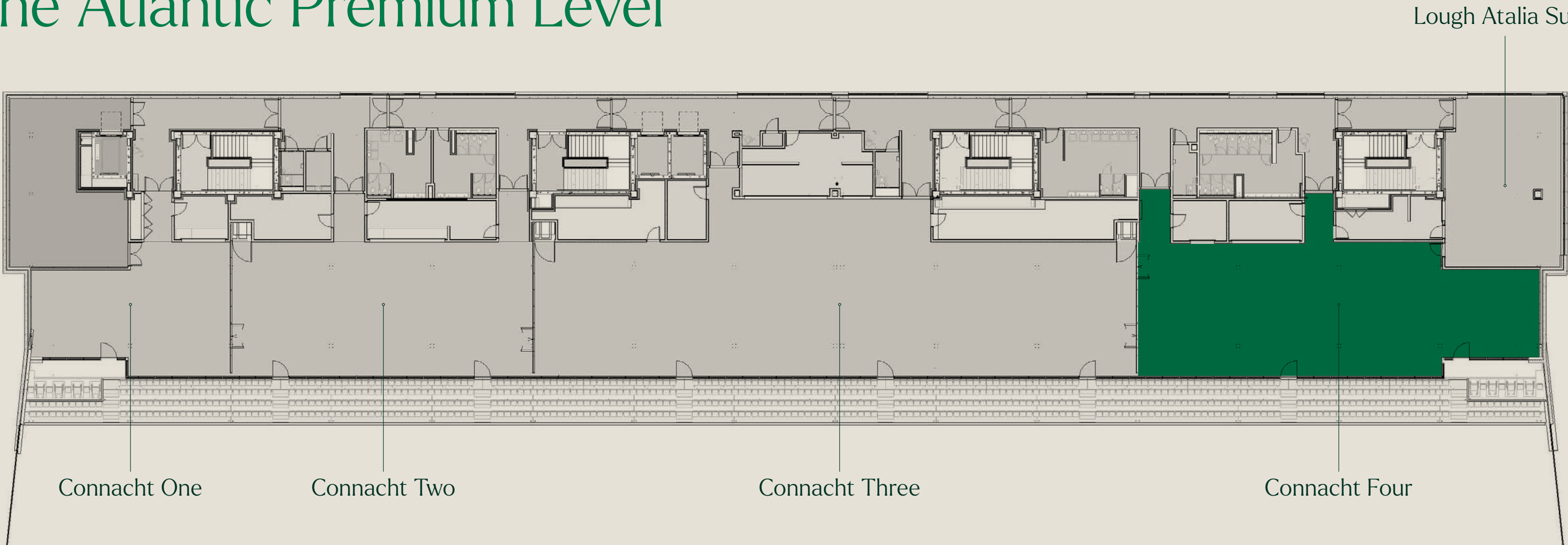
120
Cabaret Style



Connacht Four | The Atlantic Premium Level

The Perfect Space For:

- Meetings
- Small Exhibitions
- Training and Workshops
- Intimate Dinners
- Networking Receptions



Technical Details

Size: 264m²

Length: 30.3m

Width: 8.7 – 10.7m

AV: Multiple video panels, projector & screen

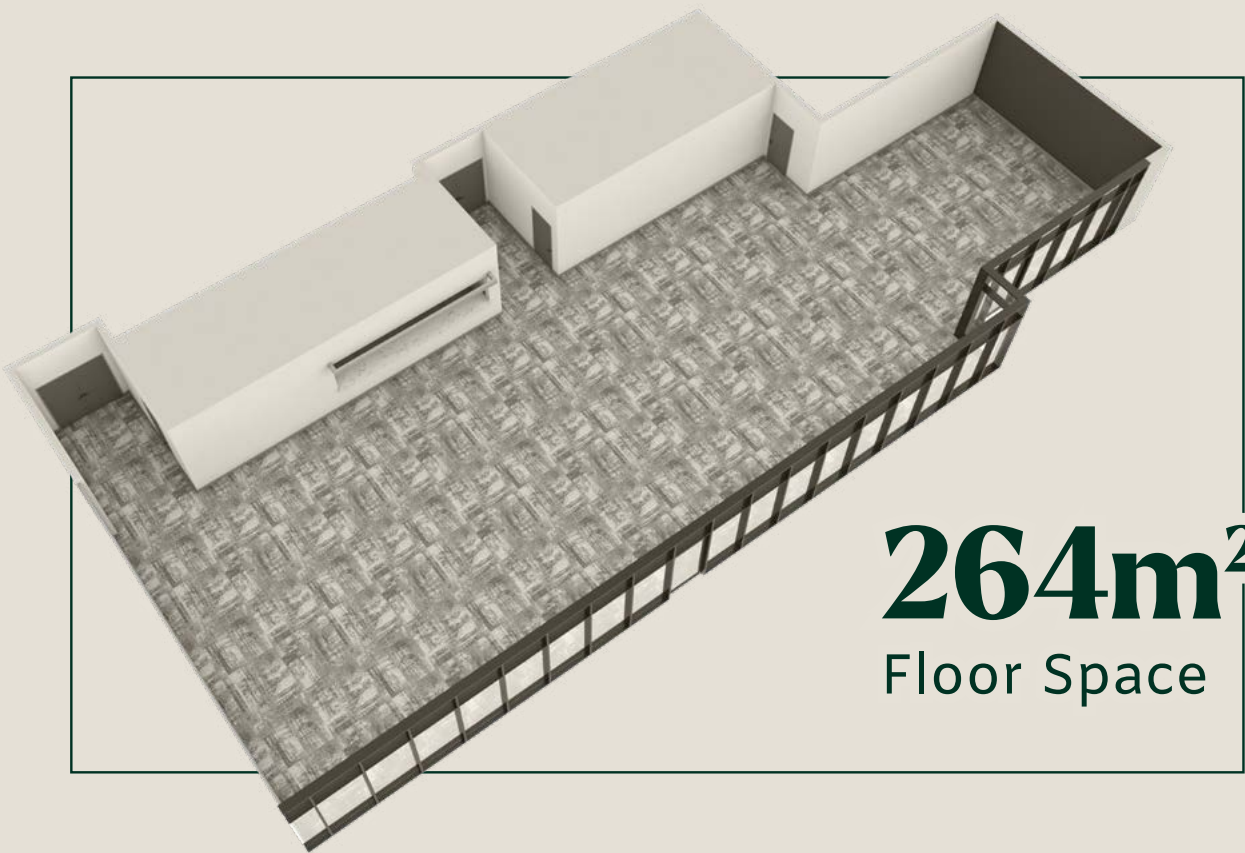
Divisible: No

Wi-Fi: Yes

Air-conditioning: Yes

Pillars: No

Natural Daylight: Yes



264m²
Floor Space

120
Banquet Style

145
Theatre Style

72
Classroom Style

260
Reception Style

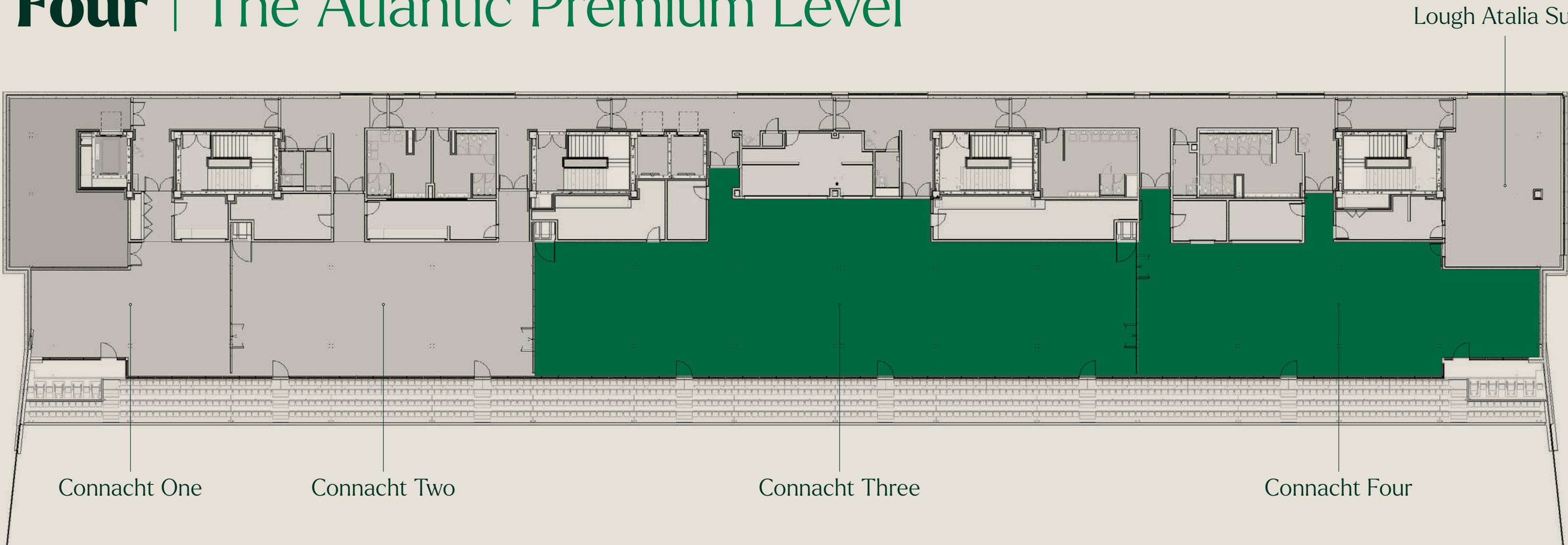
72
Cabaret Style



Connacht Three + Four | The Atlantic Premium Level

The Perfect Space For:

- Conferences
- Gala Dinners
- Exhibitions
- Training and Workshops
- Networking Receptions
- Celebrations
- Educational Events
- Graduations



Technical Details

Size: 637m²

Length: 76.05m

Width: 8.7 – 10.7m

AV: Multiple video panels, projector & screen

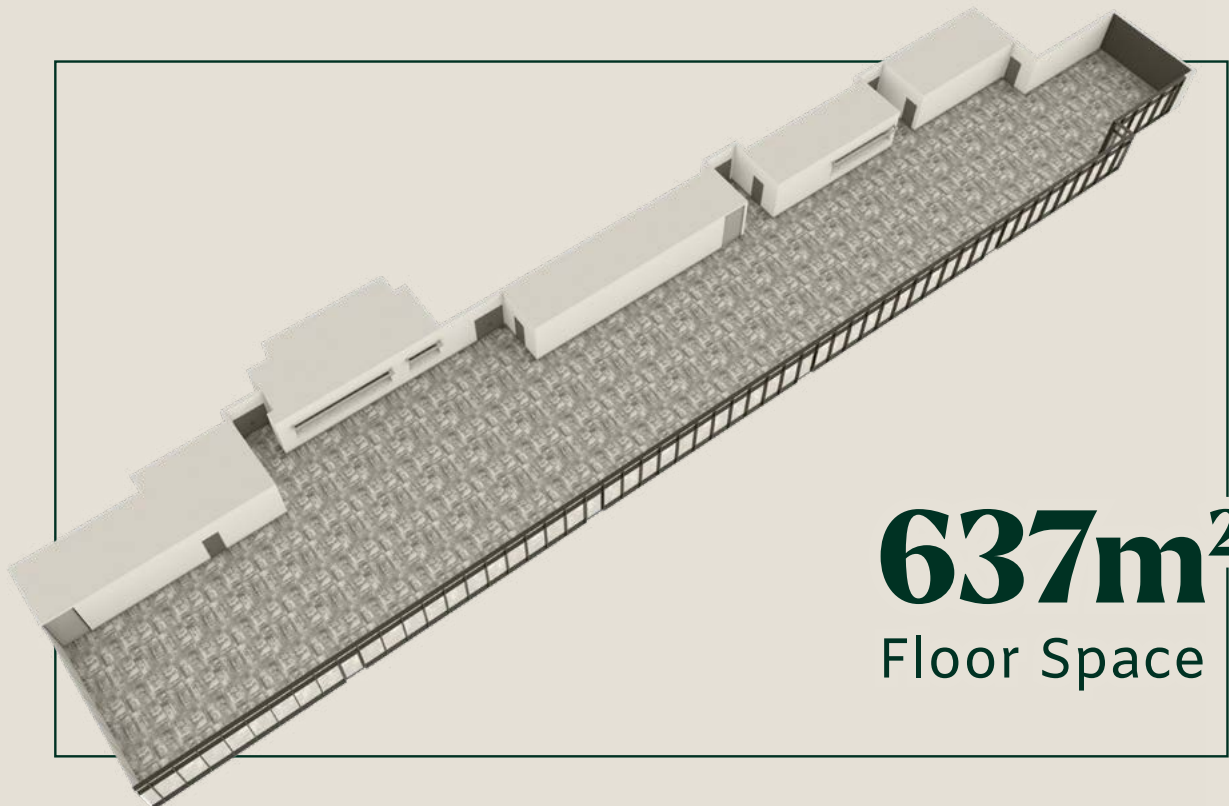
Divisible: Yes (by two)

Wi-Fi: Yes

Air-conditioning: Yes

Pillars: No

Natural Daylight: Yes



320
Banquet Style

192
Cabaret Style

192
Classroom Style

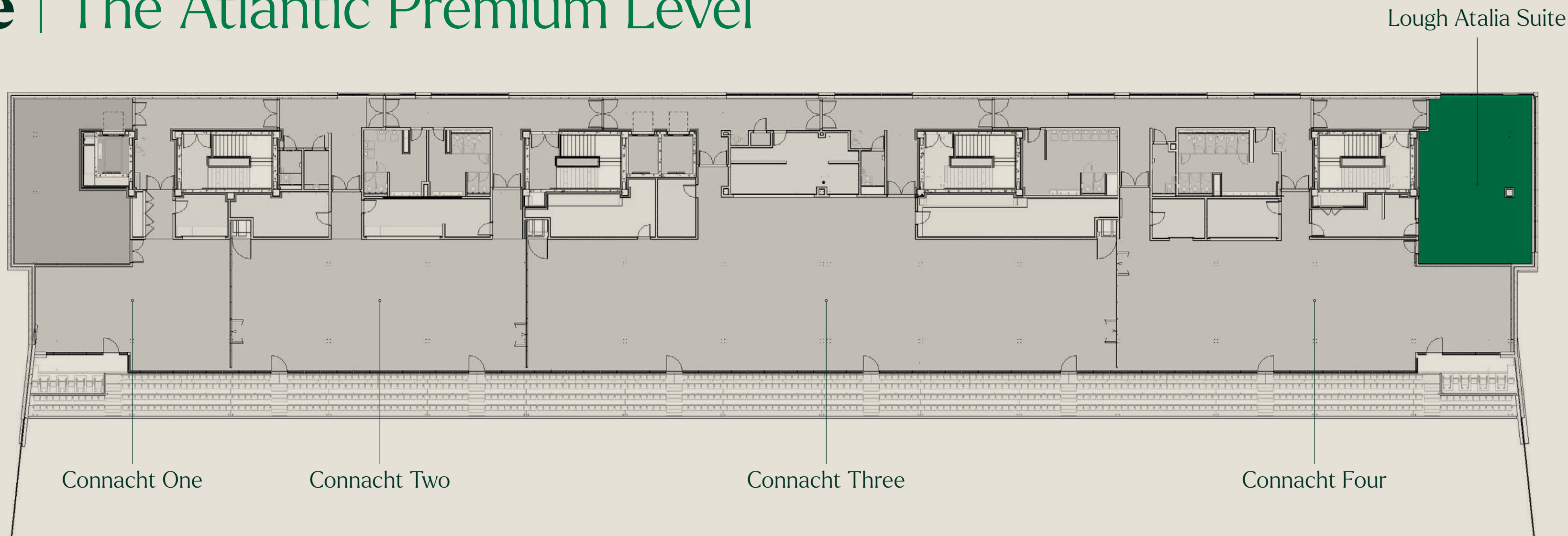
720
Reception Style



Lough Atalia Suite | The Atlantic Premium Level

The Perfect Space For:

- Executive Meetings
- Training and Workshops
- Private Dining
- Networking Receptions
- Education and Graduations
- Media or Content Creation
- Conference Breakout



Technical Details

Size: 114m²

Length: 30.3m

Width: 8.7 - 10.7m

AV: Multiple video panels, projector and screen

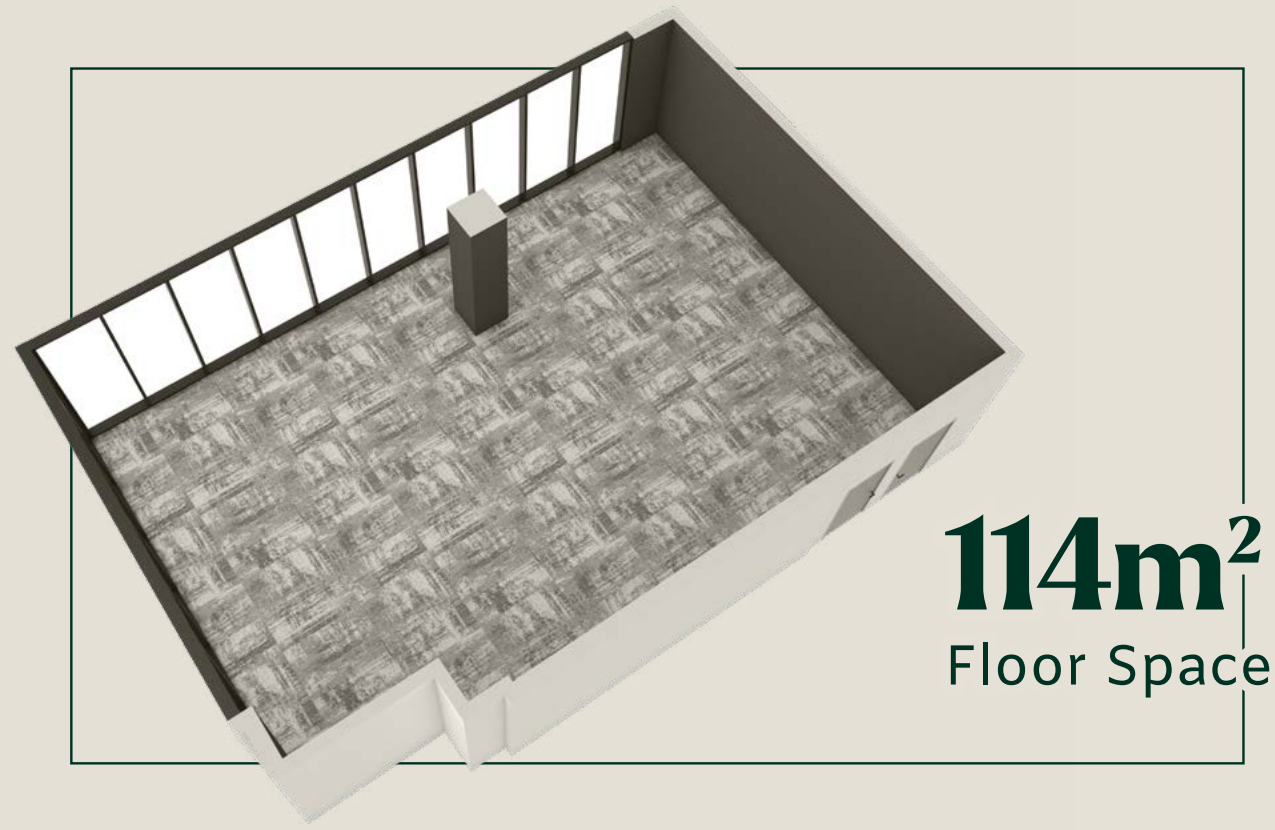
Divisible: No

Wi-Fi: Yes

Air-conditioning: Yes

Pillars: Yes

Natural Daylight: Yes



50
Banquet Style

34
Boardroom Style

60
Theatre Style

30
Classroom Style

100
Reception Style

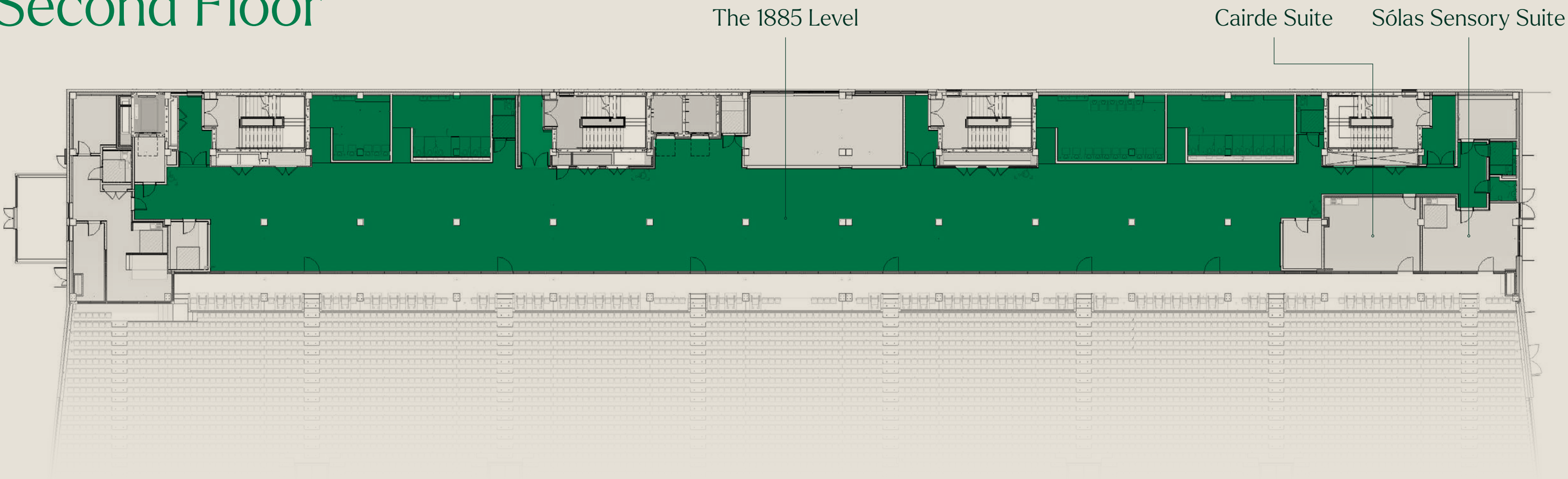
30
Cabaret Style



The 1885 Level | Second Floor

The Perfect Space For:

- Exhibitions and Trade Shows
- Networking and Events
- Conference Breakout
- Plenary Space
- Team Building
- Product Launches
- Graduations



Technical Details

Size: 545m²

AV: Multiple video panels

Divisible: No

Wi-Fi: Yes

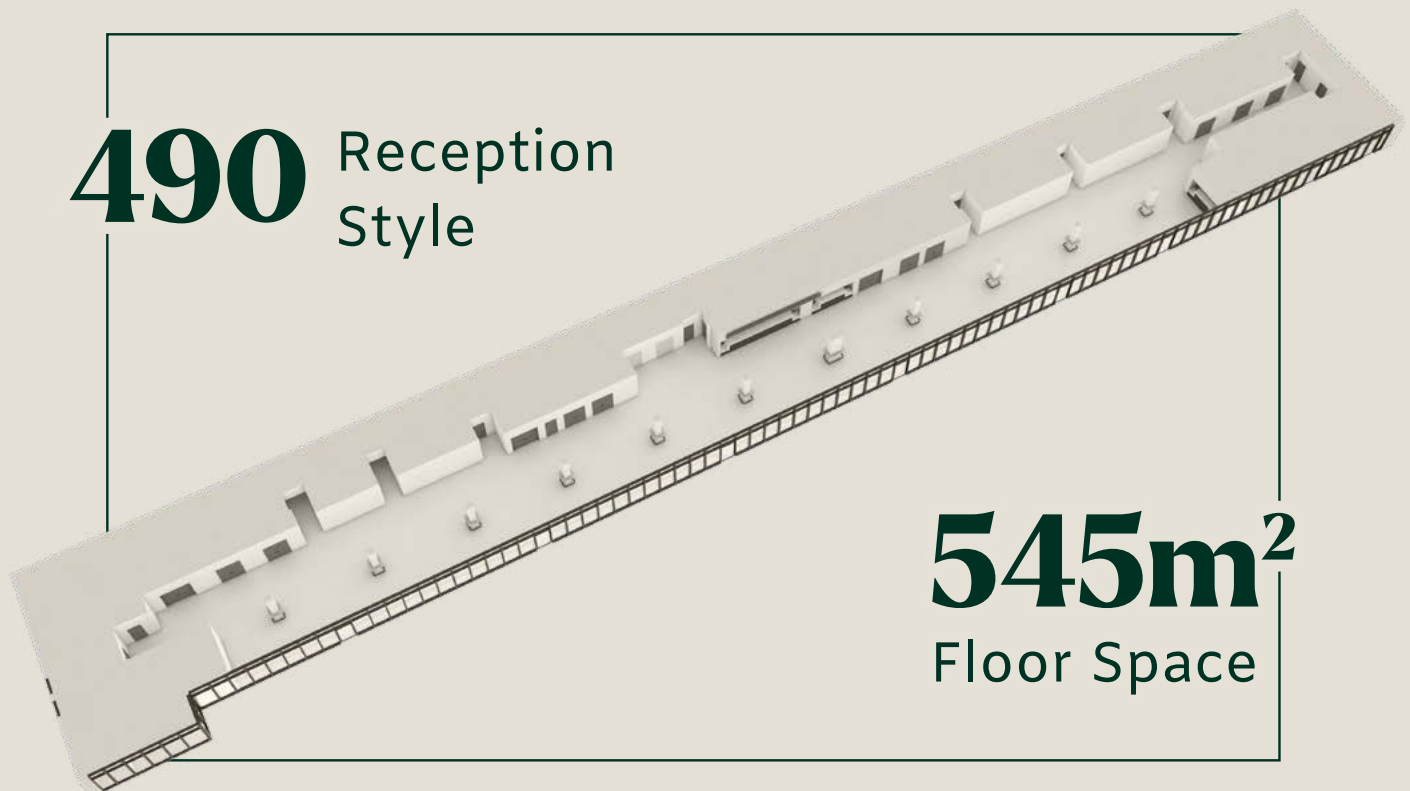
Air-conditioning: Yes

Pillars: Yes

Natural Daylight: Yes

View: Pitch views

Natural Daylight: Yes





The Clubhouse | Ground Floor

The Perfect Space For:

- Receptions
- Exhibitions
- Conference Posters

Technical Details

Size: 384m²

Length: 20m

Width: 30m

Height: Double height ceiling

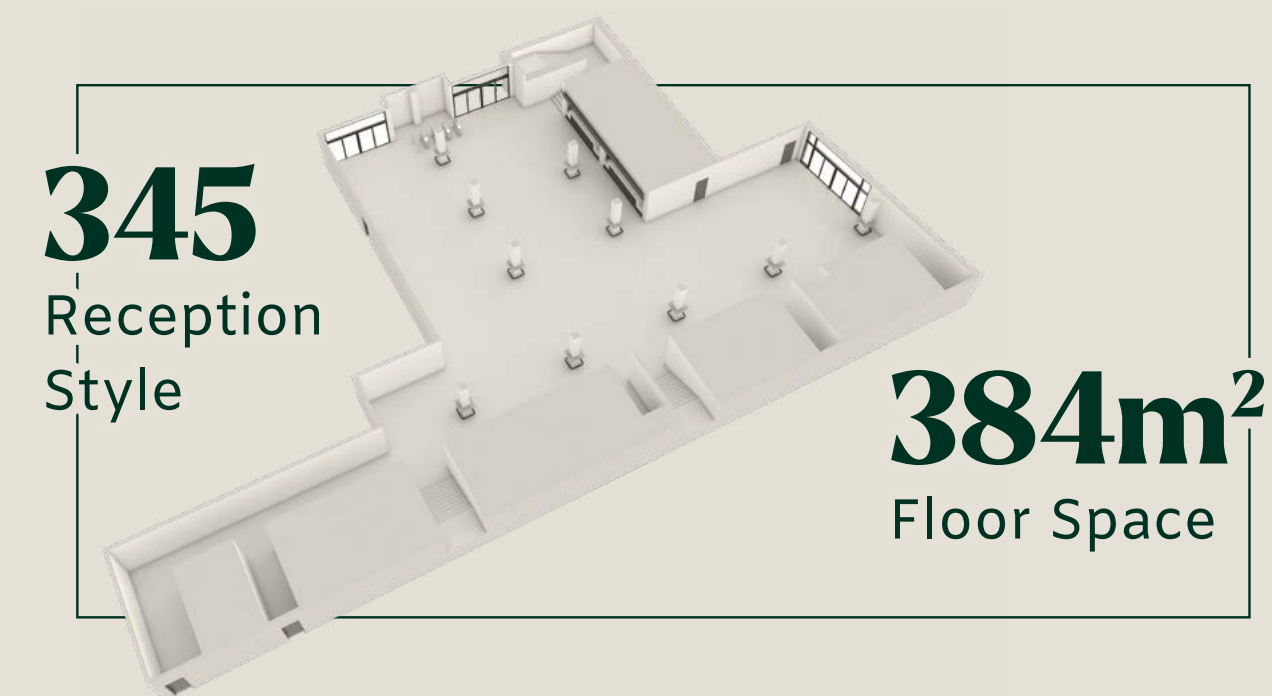
AV: Adaptable lighting

Divisible: No

Wi-Fi: Yes

Air-conditioning: Yes

Pillars: Yes





The XV | Ground Floor

The Perfect Space For:

- Receptions
- Exhibitions
- Conference Posters

Technical Details

Size: 335m²

Length: 20m

Width: 15m

Height: Double height ceiling

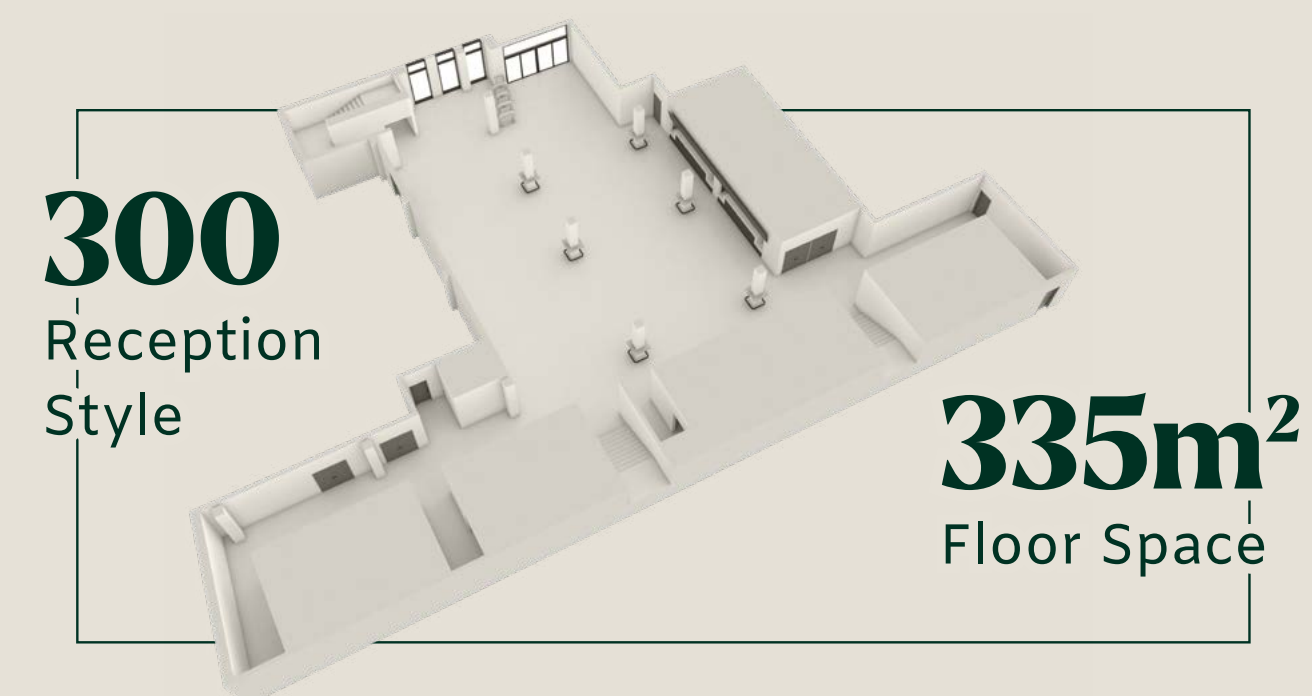
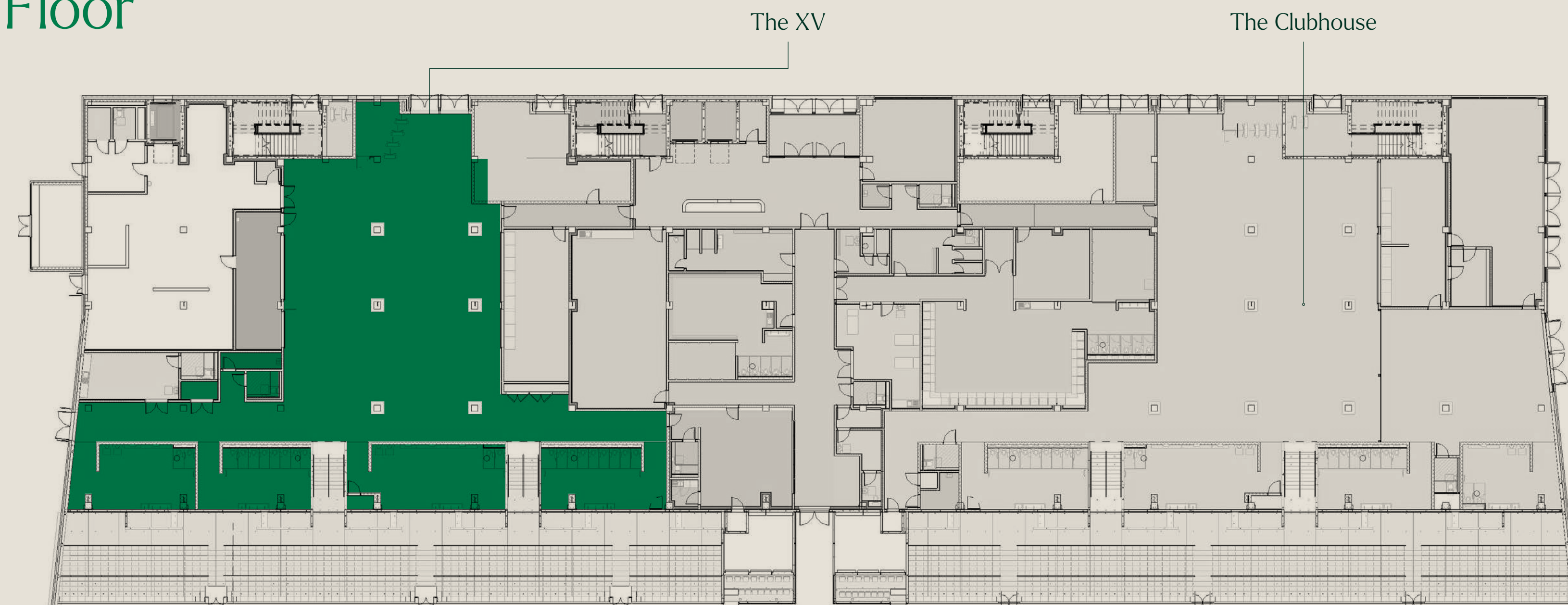
AV: Adaptable lighting

Divisible: No

Wi-Fi: Yes

Air-conditioning: Yes

Pillars: Yes

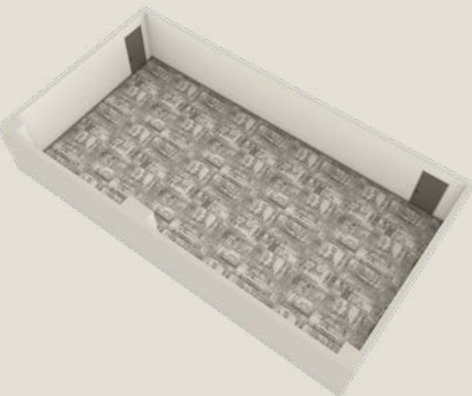




Media Suite | Ground Floor

The Perfect Space For:

- Breakout Room
- Boardroom Meetings
- Training and CPD Events
- Press Conferences and Media
- Hybrid Events and Webinars

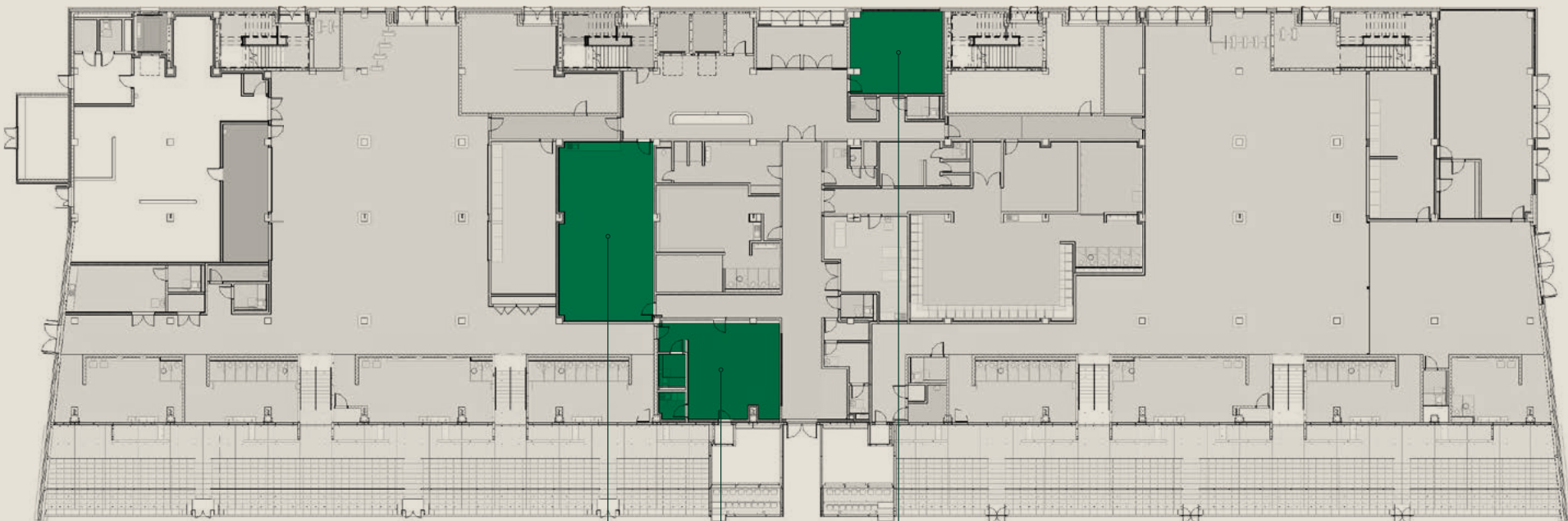


Technical Details

Size: 90m ²
Length: 10.1m
Width: 7.6m
AV: Video panel and projector
Divisible: No
Wi-Fi: Yes
Air-conditioning: Yes
Pillars: No
Natural daylight: No

Capacity Chart

Banquet Style	–
Boardroom Style	28
Theatre Style	70
Classroom Style	42
Reception Style	120
Cabaret Style	36

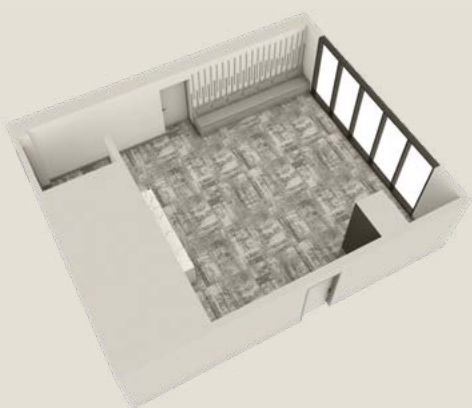


Media Suite The Tunnel Club The Green Room

The Tunnel Club | Ground Floor

The Perfect Space For:

- Boardroom Meetings
- Private Dining
- Incentive Experiences



Technical Details

Size: 60m ²
AV: Video panels
Divisible: No
Wi-Fi: Yes
Air-conditioning: Yes
Pillars: No
Natural daylight: Yes

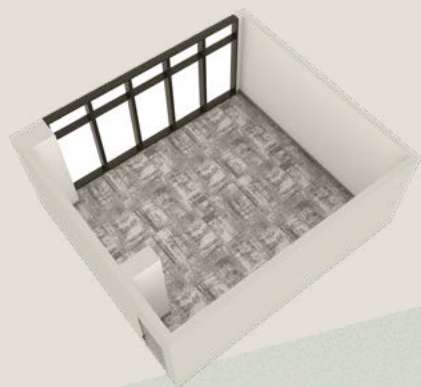
Capacity Chart

Banquet Style	20
Boardroom Style	12
Theatre Style	–
Classroom Style	–
Reception Style	40
Cabaret Style	–

The Green Room | Ground Floor

The Perfect Space For:

- Workshops and Training
- Small Seminars
- Client Pitches
- Networking
- Conference Breakout



Technical Details



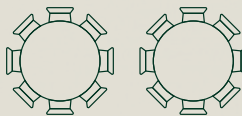
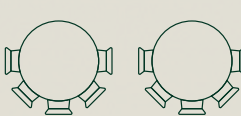


Size: 30m ²
AV: Video panel and projector
Divisible: No
Wi-Fi: Yes
Air-conditioning: Yes
Pillars: No
Natural daylight: Yes

Capacity Chart

Banquet Style	–
Boardroom Style	12
Theatre Style	30
Classroom Style	20
Reception Style	–
Cabaret Style	–



Summary Capacity Chart

										
Space	Location	Floor Area (m²)	Divisible	Max Capacity	Boardroom	Theatre	Banquet	Cabaret	Classroom	Reception
The XV	Ground Floor	335	No	300	–	–	–	–	–	300
The Clubhouse	Ground Floor	385	No	345	–	–	–	–	–	345
The Green Room	Ground Floor	30	No	30	12	30	–	–	20	
Media Suite	Ground Floor	90	No	120	28	70	–	36	42	120
The Tunnel Club	Ground Floor	60	No	40	12		20			40
The 1885 Level	2nd Floor	545	No	490	–	–	–	–	–	490
Cairde Suite	2nd Floor	40	No	36	16	30	–	–	–	36
The Connacht Suite	3rd Floor	1100	Yes	1040	–	–	530	320	–	1040
Connacht One	3rd Floor	108	No	120	–	72	60	36	36	120
Connacht Two	3rd Floor	140	No	200	–	100	100	60	60	200
Connacht One + Two	3rd Floor	248	Yes	320	–	172	160	96	96	320
Connacht Three	3rd Floor	373	No	460	–	200	200	120	120	460
Connacht Four	3rd Floor	264	No	260	–	145	120	72	72	260
Connacht Three + Four	3rd Floor	637	Yes	720	–	–	320	192	192	720
Lough Atalia Suite	3rd Floor	114	No	100	34	60	50	30	30	100
High Performance Centre	Ground Floor	2800	Yes	2500	–	2250	1800	1000	1500	2500

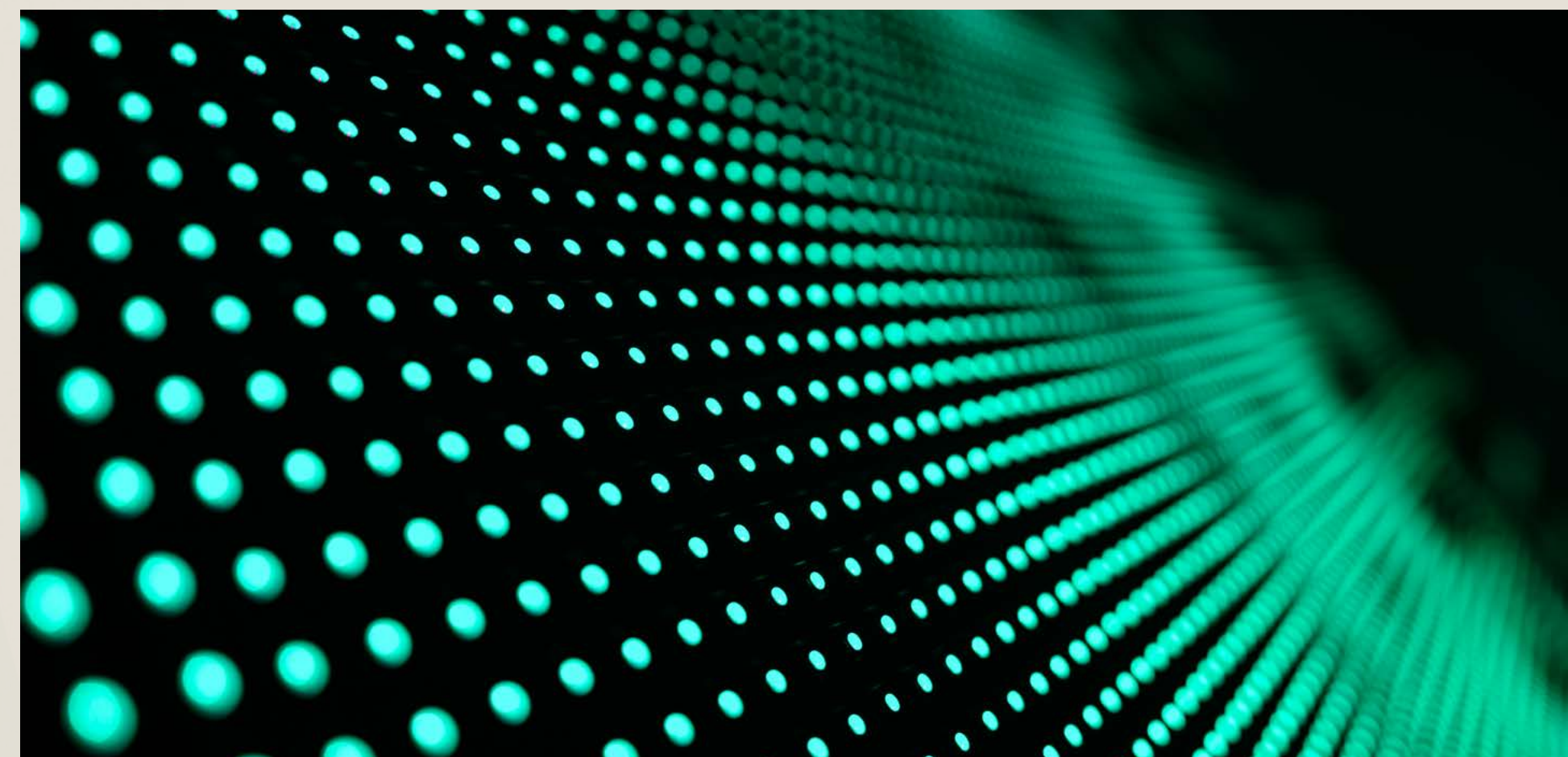


We combine state-of-the-art
facilities with advanced technology
to deliver

A SEAMLESS AND IMPACTFUL EVENT EXPERIENCE.

Our meeting spaces feature high-speed Wi-Fi, large-format full HD
projection systems, and integrated audio solutions for clear, evenly
distributed sound.

The Connacht Suite offers creative LED lighting, acoustic wall treatments,
and built-in stage and storage facilities, all designed to support events that
are both professional and memorable. Our on-site AV team can support
you with any technology requirements and help turn your event into a
memorable and inspiring occasion.



In collaboration with our industry-leading AV provider, Sound to Light, Dexcom Stadium offers cutting-edge technology and event innovations that bring your experience to life, wherever your audience is.

Our flexible spaces and integrated systems allow every delegate to fully engage, whether attending in person or virtually.

From immersive breakout rooms and branded exhibition areas to sponsor visibility and networking opportunities, our expert team is here to help you break down barriers and elevate your event. Simply log in with your preferred video conferencing platform, and we'll take care of the rest.

Using Dexcom Stadium as your virtual event base makes it easy to connect with audiences near and far, delivering engaging, accessible experiences with ease.



Regularly recognised
as one of the
**FRIENDLIEST
CITIES IN
THE WORLD**

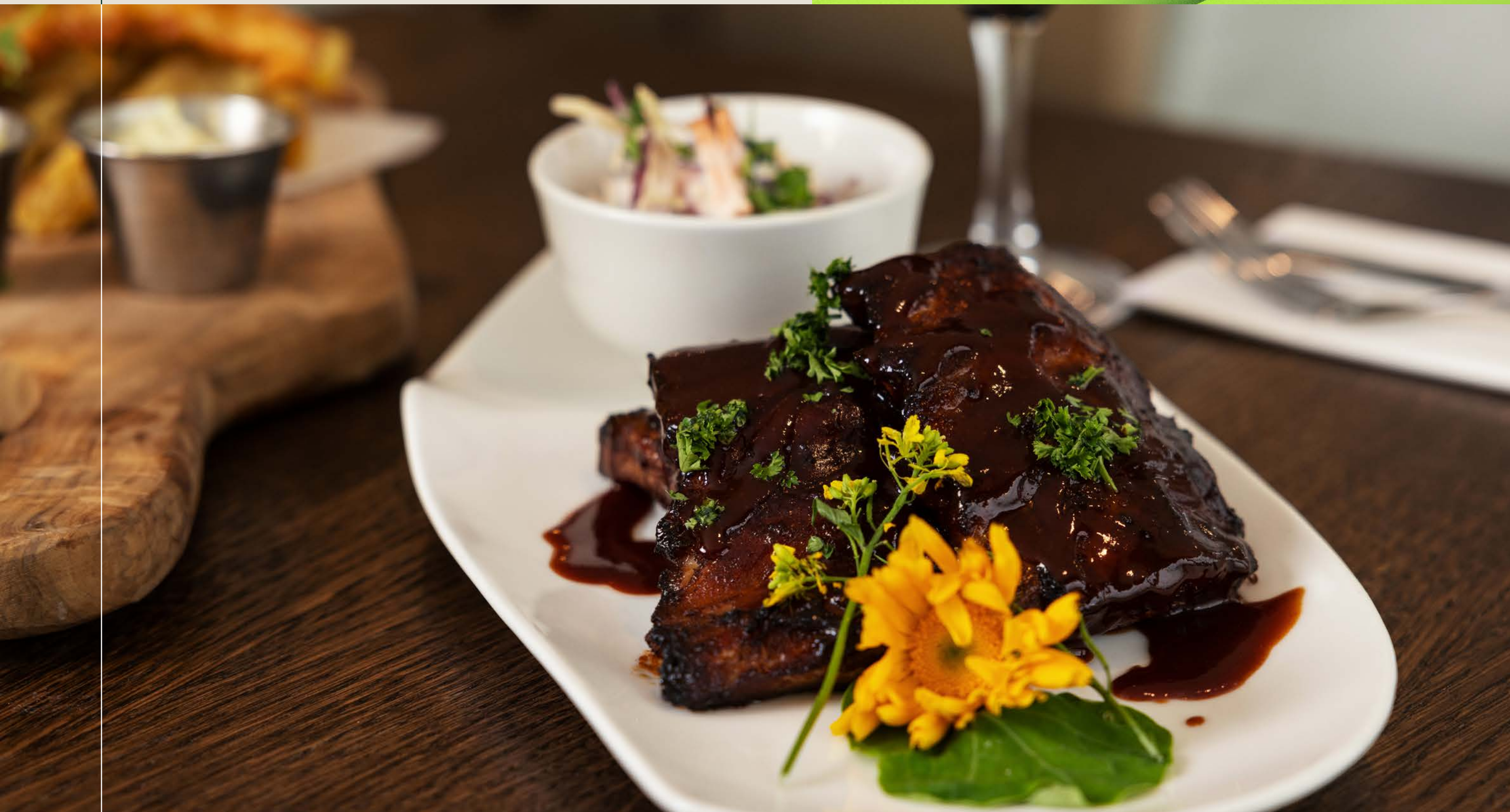
Galway's welcoming spirit is reflected in every aspect of Dexcom Stadium. That same warmth and hospitality carries through to the exceptional service delivered by our dedicated team.

From arrival to your departure, our team will provide you with exceptional service and high-quality standards throughout your time with us.





Dexcom Stadium and Connacht Rugby are proud to partner with Master Chefs to offer an **unrivalled culinary experience.**

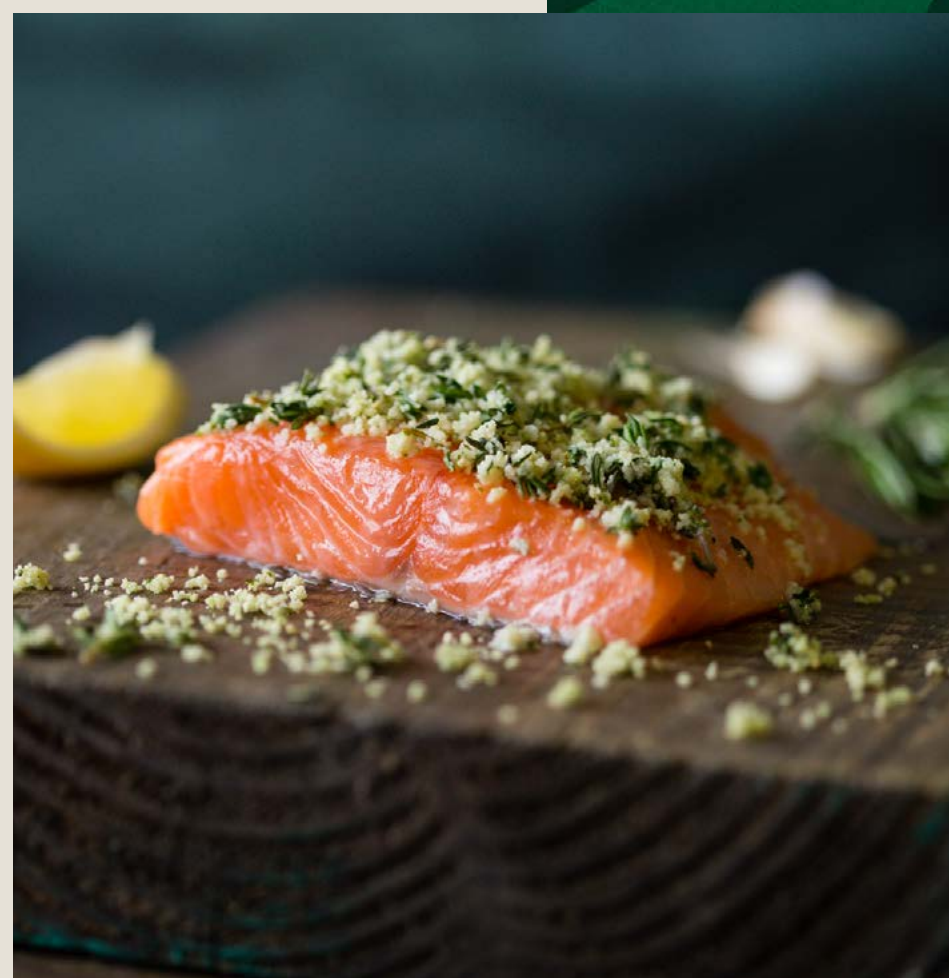


Master Chefs

Master Chefs is an independently owned Irish contract and event catering company, and are industry leaders in sustainable practices who are fully committed to their goal of becoming a zero-waste enterprise as they continue to champion their own organic Ellan Farm and local producers.

At Master Chefs, sustainability is not just an add-on, it's embedded into the way of thinking, operating and innovation. From reducing waste to regenerative farming, their approach combines bold ambition with meaningful action. Everything they do is designed to protect the planet, support people and future-proof our food system.





Seasonally inspired, locally sourced, elegantly presented.

Dexcom Stadium's catering is a celebration of Irish produce, crafted with care and creativity. Proudly sourced from Ellan Farm, our menus reflect a commitment to sustainability, freshness, and flavour.

From energising breakfasts and artisan bakes to vibrant signature bowls and seasonal plates, every dish is designed to elevate your event. Whether it's a morning meeting, full-day conference, or gala celebration, our menus offer:

- Freshly prepared, farm-to-table selections
- Creative vegetarian and gluten-free options
- Elegant presentation and flexible formats
- Locally sourced juices, energiser snacks, and artisan bakes

With the support of our expert culinary team and hospitality partners, Dexcom Stadium delivers catering that's not only nourishing but memorable too.

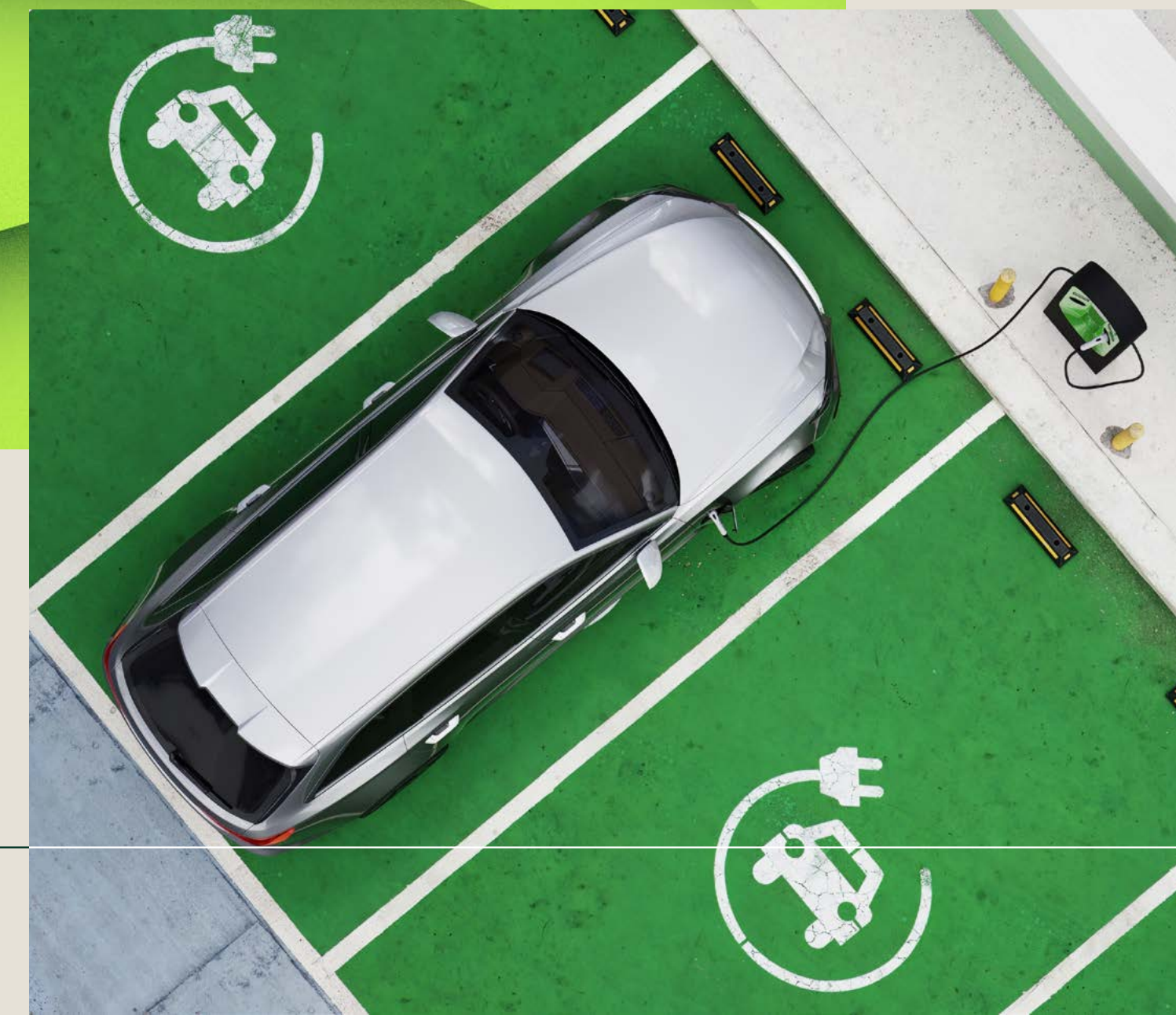


As Dexcom Stadium develops, we're excited to share that **sustainability and accessibility** are foundational to our development strategy.

Key features currently planned include:

- Energy-efficient lighting and building systems
- Advanced recycling and waste management processes
- Electric vehicle (EV) charging stations
- Fully accessible entrances and facilities
- Designated accessible seating and viewing areas
- Step-free routes across key areas of the stadium

We're committed to delivering a venue that's not only modern and inclusive, but also environmentally responsible.





dexcom **STADIUM**

MEETINGS AND EVENTS

For further information please call our
team of event specialists.

📍 Dexcom Stadium, College Road,
Galway, H91 H340

✉ events@connachtrugby.ie

🌐 www.dexcomstadium.events

📷 [@dexcomstadium](https://www.instagram.com/dexcomstadium)

☎ (091) 447 751